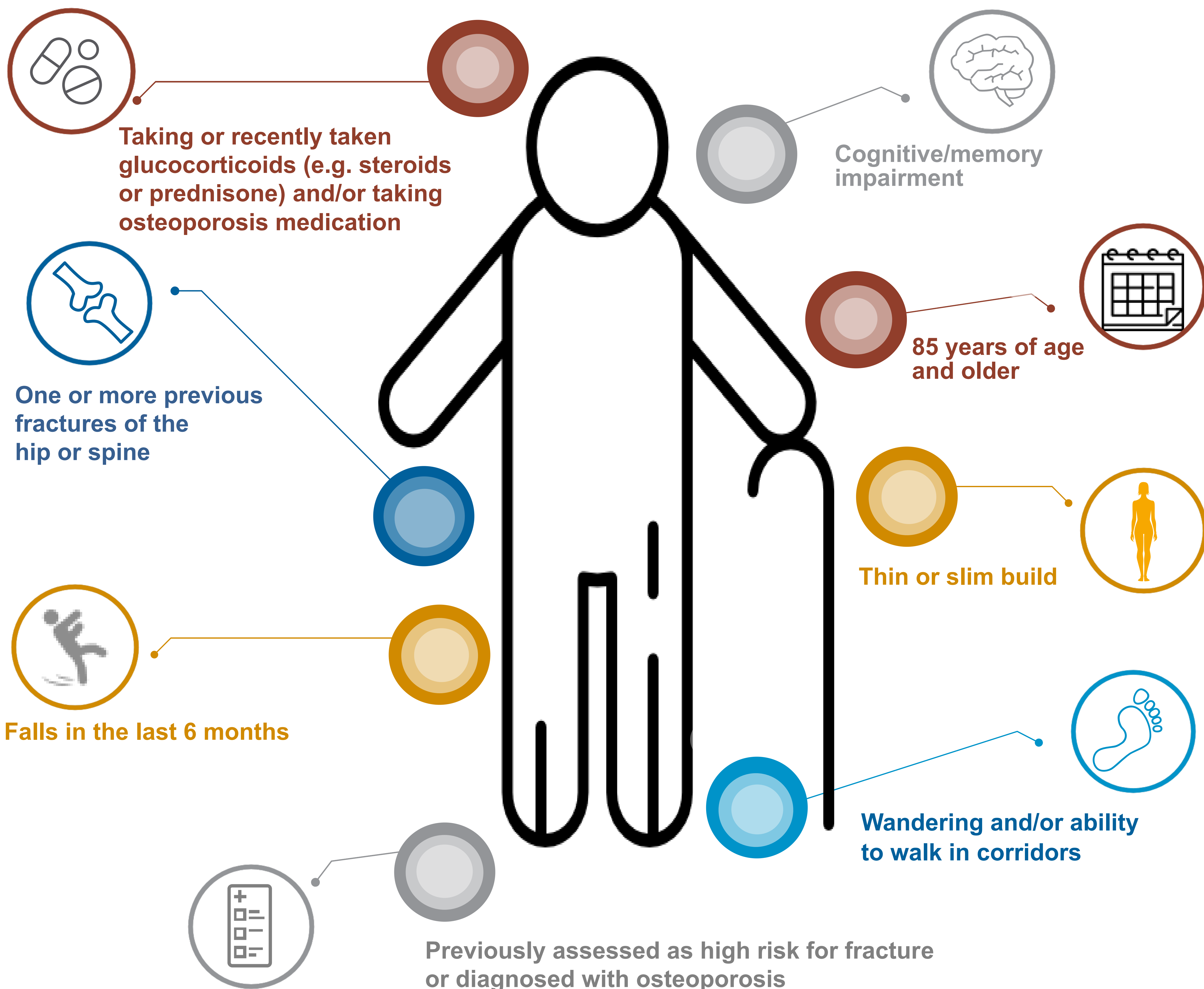


Fracture Risk Factors for LTC Residents

44% of long-term care (LTC) residents are at high to very high risk for fracturing a bone (up to an 18% chance of fracturing per year), especially when a fall or sudden movement happens. Some residents may spontaneously have a fracture without having a fall due to the fragility of their bones, especially their back.

The following risk factors make a resident high to very high risk for a fracture in LTC. The more of these a resident has, it may move them from high to very high risk.



Produced by Family Councils of Ontario in partnership with GERAS and Osteoporosis Canada



Family Councils Ontario



www.fco.ngo



@FamCouncils_ONT

Source: Ontario Osteoporosis Strategy for Long-Term Care, GERAS Centre, Hamilton.

These risk factors are based on the Fracture Risk Scale for LTC and the 2015 Recommendations for Fracture Prevention in Long-Term Care.

Version 1.1 October 2018

© Family Councils Ontario